

## Design and order coding example

PSLF A1/380/4 - 3 - A2J40/40/EA/3 - E2 - G24

Solenoid voltage 12V DC, 24V DC

- Operated using a proportional amplifier or PLVC
- Magnets with different plug versions
- Explosion-proof magnets

End plates

Valve sections with actuation

Size

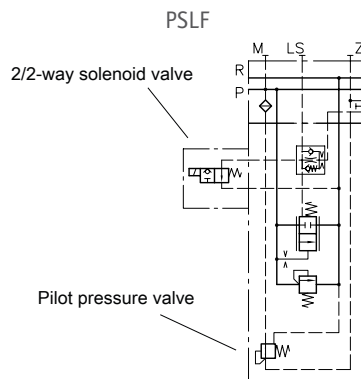
Connection block

- Various connection threads
- Pressure-limiting valve (pilot-controlled main pressure-limiting valve) in connection block

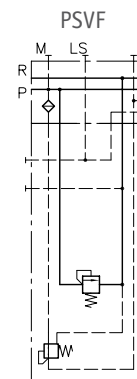
**Basic type** Type PSLF (supply via constant pump),  
Type PSVF (supply via variable displacement pump),  
size 3, 5 and 7

## Function

### Connection blocks:



Connection block for constant pump systems with integrated 3-way controller, pressure-limiting valve and LS shutdown



Connection block for control pump systems with and without pressure-limiting valve

### Additional versions of connection blocks:

- 2/2-way solenoid actuated directional valve for arbitrary idle pump circulation
- Additional damping of the 3-way flow controller or pump controller
- Proportional adjustable pressure limitation

### Valve sections:

Basic symbol	Symbol									
	L	M	F	H	J	B	R	O	G	