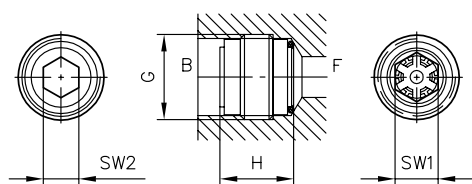
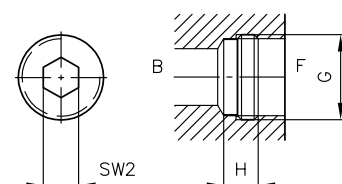
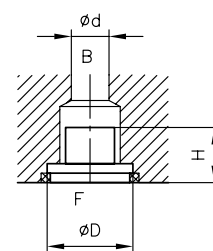


**General parameters and dimensions**
**BC..**  
 Screw-in valve

**BE ..**

**EB..**  
 Orifice insert


	$Q_{max}$ [l/min]	$p_{max}$ [bar]	Thread	Dimensions				m [g]
				H [mm]	G / D	SW = a/f 1/Æd	SW = a/f 2	
<b>BC 1</b>	20	700	G 1/4 A	13	G 1/4 A	SW 8	SW 4	6
<b>BC 2</b>	35	700	G 3/8 A	15	G 3/8 A	SW 9	SW 5	10
<b>BC 3</b>	60	500	G 1/2 A	18	G 1/2 A	SW 12	SW 8	24
<b>BE 0</b>	12	500	G 1/8 A	5	G 1/8 A	SW 4	-	2
<b>BE 1</b>	25	500	G 1/4 A	6	G 1/4 A	SW 5	-	4
<b>BE 2</b>	40	500	G 3/8 A	7	G 3/8 A	SW 8	-	6
<b>BE 3</b>	70	450	G 1/2 A	7.5	G 1/2 A	SW 10	-	10
<b>BE 4</b>	120	400	G 3/4 A	9	G 3/4 A	SW 12	-	18
<b>EB 0</b>	6	500	-	1.8	9	5.6	-	2
<b>EB 1</b>	10	700	-	1.8	11	7.5	-	4
<b>EB 2</b>	40	700	-	9	18	12.8	-	6
<b>EB 3</b>	100	500	-	11.5	22	16	-	10
<b>EB 4</b>	120	500	-	10	28	25	-	18

**Associated technical data sheets:**

- [Restrictor check valve type BC: D 6969 B](#)
- [Restrictor check valve type BE: D 7555 B](#)
- [Orifice type EB: D 6465](#)

**Similar products:**

- Insert check valves type RK, RB, RC, RE, ER: [Page 242](#)

- Restrictor check valves type RD, ED, RDF: [Page 232](#)